



OLIDENT

PERFECTION
in simplicity

composite
restorations





**Republic
of Poland**

European Union
European Regional
Development Fund





OLIDENT

Contents

Let's see **how it all started...**

6	ONEshade - simple and universal
12	OliBULK Fill - fast and strong
18	Common restorations made easy - tips from a practitioner
20	Posterior morphology by Dr. Karol Babiński
22	OliCoXP - nano-ceramic architecture
26	Anterior aesthetics by Dr. Igor Florkiv
28	OliCoXP Bleach for a "Hollywood smile" by Dr. Sadegh Ganji
30	AZURE Incisal imitating opal
34	OliEtch BOND reinforced with 10-MDP
38	TT-Master - shapes that matter
40	OliBRUSH esthetic in black and/or white
42	Packaging, sizes, codes

A photograph of a person sitting in a modern armchair with a black and white geometric pattern. The chair is outdoors on a light-colored tiled floor, with a lush green moss wall in the background. The person is wearing a white shirt and dark trousers. The image is partially obscured by a white text box on the left side.

A meeting

of exceptional quality
with **inspiring talent**

High quality doesn't have to be expensive. This is the fundamental ethos of the founder and president of OLIDENT, Dr. Raimund Kuspiel. It is not easy to implement. It requires a solid stubbornness, immense patience and a lot of time spent on testing. However, the result is worth it, as OLIDENT products enjoy a remarkable reputation among dentists.

Another important factor for verifying the quality of a product is finding an exceptional dentist to test them. In 2019, Dr. Karol Babinski joined forces with us. An extremely skilled specialist, but also an inspiring adopter of new solutions and procedures.

The fruit of this collaboration is our new composites and a new idea of filling cavities. Today, doctors from all over the world use this concept, saving what is most valuable - **their time**.





ONESHade
ADAPTIVE COLOUR TECHNOLOGY

ADAPTIVE COLOUR TECHNOLOGY
ONESHade

Less means more!

Many years ago, we discontinued several dozen composite colours from our range after close cooperation with practitioners revealed what was really needed in the treatment of aesthetic fillings. Our sets of OliREVO, OliCo XP and VIP esthetic composites have at most 10 colours, from which dentists can easily create natural restorations, and 2-3 colours for special tasks.

It is now time to take this a step further with an additional product.
A product that changes a lot.



ONeshade
ADAPTIVE COLOUR TECHNOLOGY
UNIVERSAL

ONeshade
UNIVERSAL

ONEshade

ADAPTIVE COLOUR TECHNOLOGY

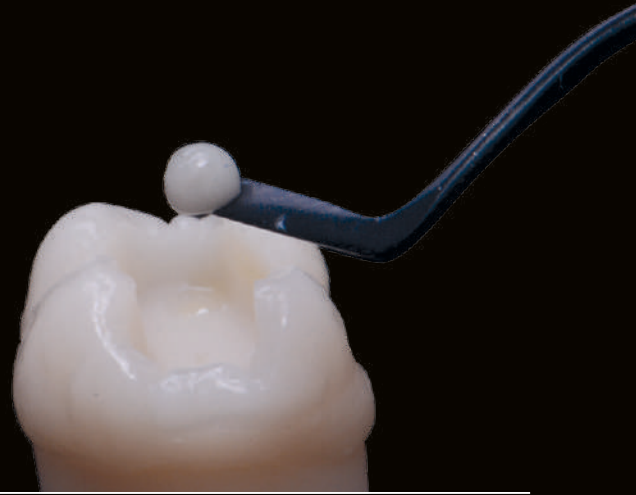
Facilitating the dentist's work by simplifying procedures is one of our priorities when creating modern dental materials. However, there are no compromises here! The time saved is a bonus to excellent aesthetics and unquestionable mechanical properties. These requirements are perfectly met by a new composite with a completely different concept of work - ONEshade.

One universal shade for most natural tooth colors.
True, unique chameleon effect.

MAXIMUM AESTHETIC INTEGRATION

The ONEshade composite comes in one universal shade and provides perfect colour matching to the surrounding natural tooth tissues thanks to its unique chameleon effect. This is its key value; the ONEshade filling „takes over” the colour of the surrounding tissues, and the contact edge becomes invisible.

ONEshade is intended mainly for class I and II cavities, although it is also great for small cavities of class III and V.



Examples of teeth with quite extreme shades, filled with our universal ONEshade composite.

before



after

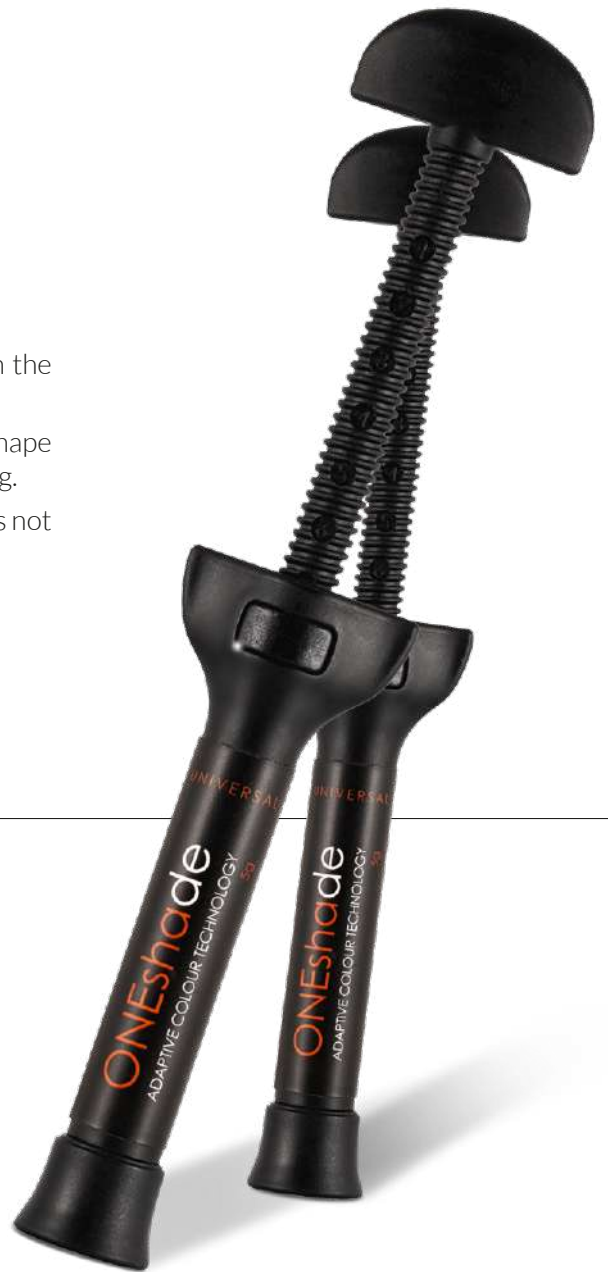


1 universal shade
ONEshade

- ✓ **time saving**
no need for time-consuming colour selection
- ✓ **cost saving**
no unnecessary and expired syringes in the drawer

A PRACTICAL CHOICE WITHOUT COMPROMISE

- A composite that will save even more time and more space in the drawer.
- A composite that allows to you to focus more attention on the shape of the restoration rather than time-consuming colour matching.
- A composite that will allow to use existing techniques, and does not require additional specialised colour selection courses.
- A composite: **ONEshade**.

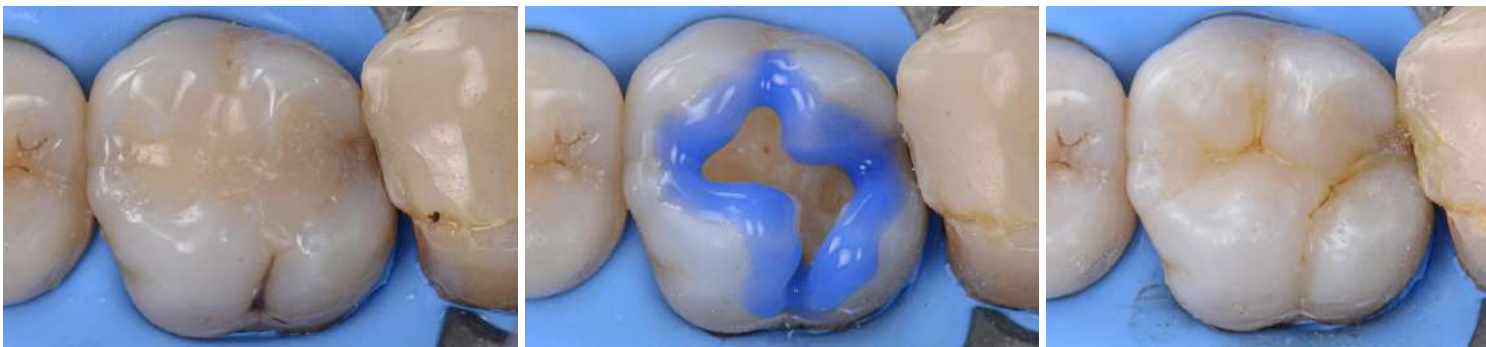


EXPERT OPINION:

In 80% of cases, the use of ONEshade in duet with OliBULK Fill is a sufficient solution that fulfills physical and aesthetic functions.

Dr. Karol Babinski

Co-founder of the concept of universal composite fillings with ONEshade and OliBULK Fill.

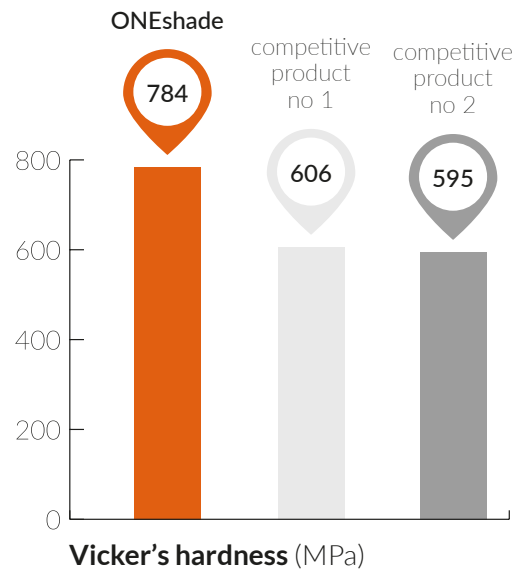
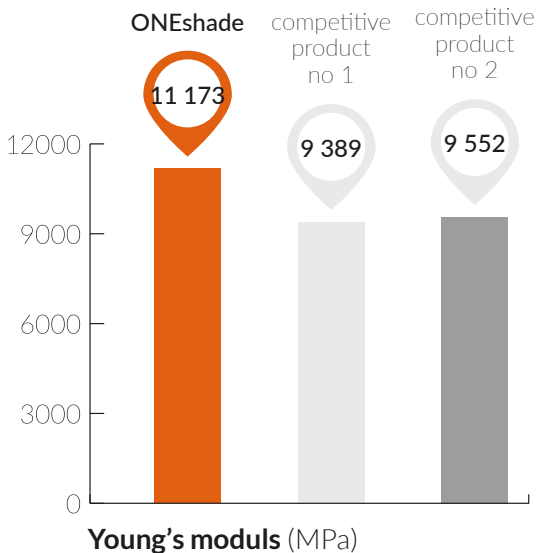
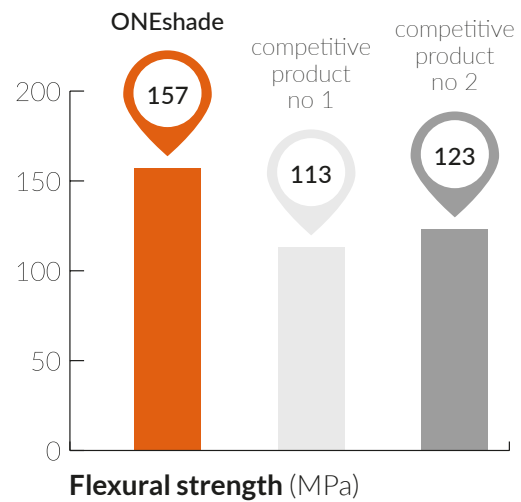
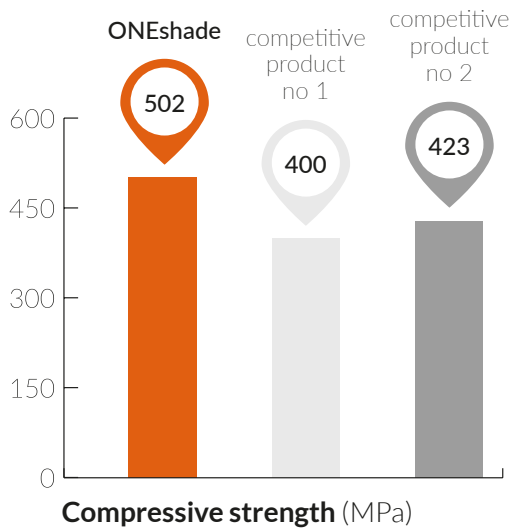


Clinical pictures by courtesy of Dr. **Karol Babinski**.
Composite materials used: OliBULK Fill MD and ONEshade.

ABOVE-AVERAGE RESISTANCE

ONEshade is a micro-hybrid composite with nanoparticles in a matrix of three resins: DUDMA, BUDMA, BisGMA. This unique combination creates a composite with high flexural strength and outstanding compressive strength. This is very important for materials recommended for posterior teeth exposed to significant occlusive loads.

In addition, ONEshade is very easy to polish thanks to both UDMA resins, which after polymerisation create a very hard and smooth surface.



The above data was obtained in an independent* study of the mechanical properties of the ONEshade composite and competing composites for similar purposes.

*Fraunhofer Institut für Keramische Technologien und Systeme, Dresden, Germany, 2011.

HIGH CONVERSION RATE

UDMA resins (urethane dimethacrylate) have long chains of cross-linking monomers, so the polymers achieve a much higher degree of conversion. This is extremely important for composites used in dentistry, as it reduces the amount of free toxic monomers that can be released directly into the human body.



UDMA STRUCTURE

1,6-bis-(methacryloyloxyethyl)amino-2,4,4-trimethylhexane

ABSOLUTE BIOCOMPATIBILITY

ONEshade cytotoxicity tests confirm that this composite is very gentle to soft tissues, fully biocompatible and does not pose a health hazard.

The complete in vitro test for the cytotoxicity of the ONEshade composite was carried out by the certified BSL BIOSERVICE research laboratory in Germany. According to the report, the ONEshade test object showed no reactivity (grade 0).





OliBULK Fill

FLOWABLE POSTERIOR BULK-COMPOSITE

OliBULK Fill is a liquid light-cured composite material for direct filling of permanent and deciduous teeth using the Bulk Fill technique. It can be used in layers up to 4mm deep.

Thanks to the optimal ratio of flowability to elasticity,
it is comfortable during application and modelling.



BULK FILL

OiiBULK Fill
BULK-FILL COMPOSITE

БУЛК-ЫЛГСОМЪСОН
ОИИБУЛК ФИЛЛ

VERSATILE USE OF YOUR CHOICE

OliBULK Fill is intended for single-step reconstructions without the layering technique. A special monomer matrix ensures the material perfectly adapts to the walls of the cavity, even when there are undercuts. If necessary, it can also be used as a base layer, and then the cusps can be modelled with a standard composite.



AESTHETIC CHAMELEON EFFECT

OliBULK Fill is available only in two shades, as the distinct chameleon effect significantly affects the aesthetic qualities of the final restoration. The ease of polishing and a long-lasting gloss are additional advantages of this material.



OLIBULK FILL IS PERFECT FOR:

- fillings with layer thicknesses up to 4 mm in Black's class I and II cavities (class II requires capping with the standard composite)
- cavity lining - as a first layer in Black's class I and II cavities
- deciduous teeth fillings
- as a dentin blocker for the so-called universal composites, eg. ONEshade

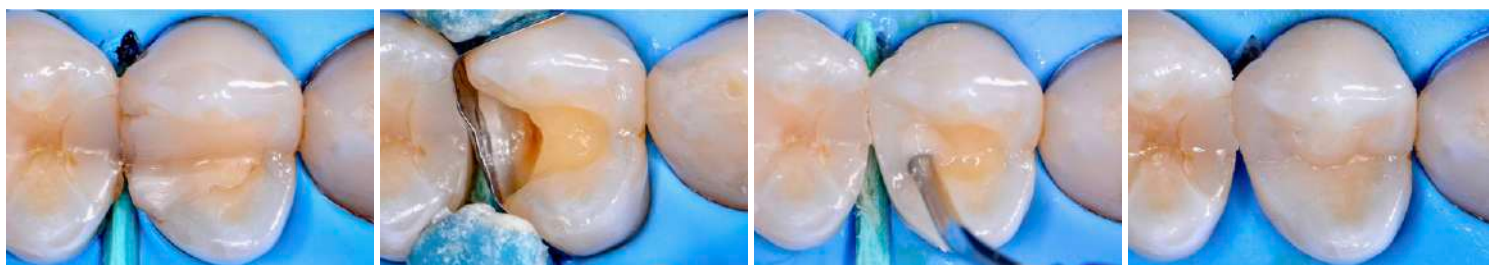


FEATURES

- layer of up to 4 mm
- two dentin shades with „chameleon” effect
- optimal ratio of flowability to elasticity
- excellent physical and mechanical properties
- high radiopacity (210% Al)
- Bis-GMA free

ADVANTAGES

- effective results
- esthetic finish
- perfect adaptation to the cavity walls
- high quality long-term fillings
- perfect visual control
- totally biocompatible



Clinical pictures by courtesy of **Dr. Karol Babinski**.
Composite materials used: OliBULK Fill MD and OliREVO.



SCAN&WATCH

Product instructional video is available on our YouTube channel.
Facts, tips and tricks are right here. For you.

CONFIRMED BY **INDEPENDENT** INSTITUTES

Two German independent research centres * have confirmed the physical and mechanical properties of OliBULK Fill. OliBULK Fill fillings are very durable and resistant to occlusive loads.

*InnoMat GmbH, Teltow, Germany 2012 and Fraunhofer Institut für Kerasche Technologien und Systeme, Dresden, Germany, 2012.

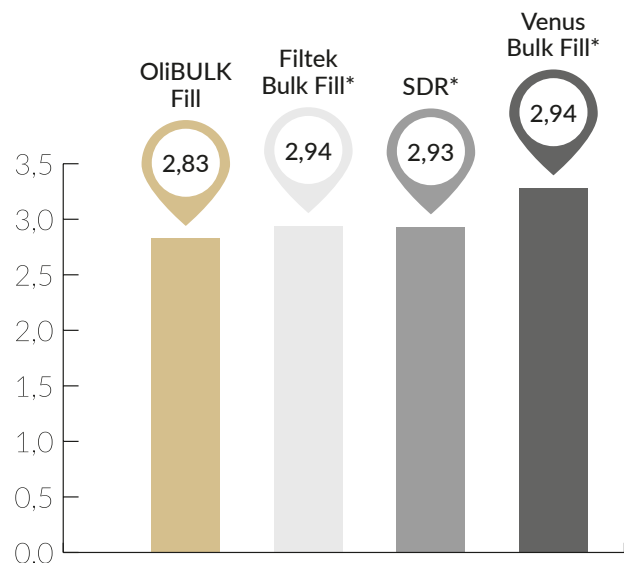
innoMAT
InnoMat GmbH

Fraunhofer
IKTS



LOW SHRINKAGE STRESS

OliBULK Fill is characterized by low polymerisation shrinkage, which reduces the shrinkage stress. The tooth walls are safe and the fillings are not exposed to marginal leakage.



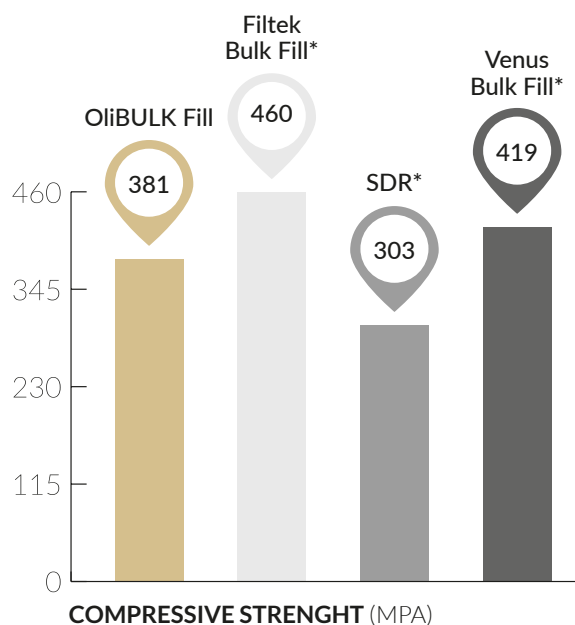
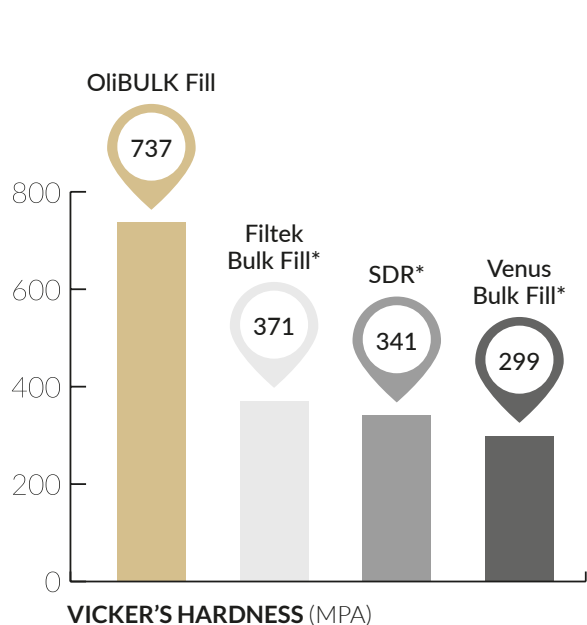
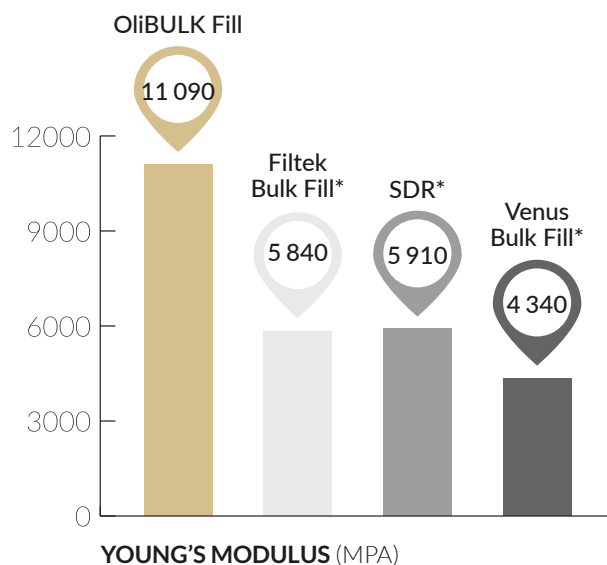
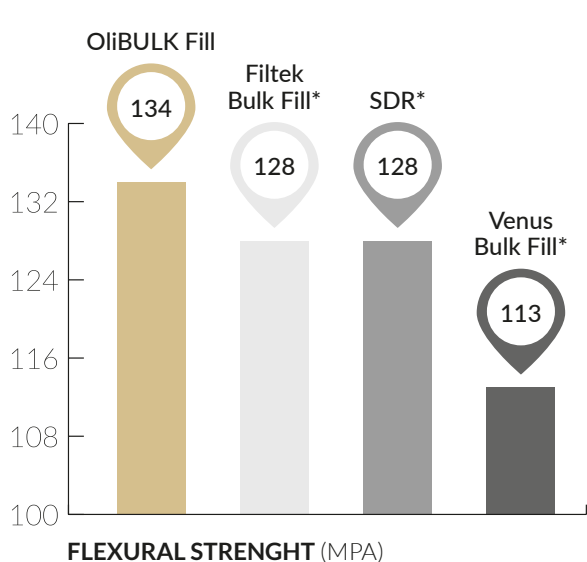
AVERAGE TOTAL SHRINKAGE (%)

Source: Independent InnoMat GmbH, Teltow, Germany, 2012

* These brands are not registered trademarks of OLIDENT.

EXCEPTIONAL MECHANICAL PROPERTIES

The physical and mechanical properties of OliBULK Fill guarantee that using the single layer technique in extensive Class I cavities is no longer a compromise. The restorations are durable and resistant to high biting forces. Thanks to such a convenient and fast procedure, OliBULK Fill is the ideal material for extensive and irregularly shaped fillings.



Source: Independent Fraunhofer Institut für Keramische Technologien und Systeme, Dresden, Germany, 2012.

* These brands are not registered trademarks of OLIDENT.

COMMON INDICATIONS OF ONESHADE & OLIBULK FILL

In order to facilitate work in the dental practice, together with Dr. Karol Babinski, we have prepared proven indications for ONEshade and OliBULK Fill composites. They constitute as much as 80% of all cases where you will save time and reduce unnecessary expenses.

NO COMPROMISE. The effect will always be aesthetic, functional and durable.



CLASS I

●	BASE:	OliBULK Fill, shade MD
●	TOP:	ONEshade
	ADHESIVE SYSTEM:	OliEtch BOND

ProTIP from Dr. K. Babiński:

“Complete the reconstruction of OliBULK Fill approx. 1.2 mm below the marginal edge. Use the tip of the probe to gently draw the material over the enamel-dentin junction. Polymerise. Reconstruct the surface morphology cusp by cusp. Earlier drawing of the ‚fissure map’ will allow to perfectly control the modelling process.”



CLASS II

●	BASE:	OliBULK Fill, shade MD
●	TOP:	ONEshade
	ADHESIVE SYSTEM:	OliEtch BOND

ProTIP from Dr. K. Babiński:

“Start by spreading a minimal amount of flowable composite, OliBULK Fill, along the junction of the cavity margin with the matrix. Without polymerising this layer, apply a condensable composite material (eg. ONEshade), form a proximal wall and polymerise. The previously applied flowable material will ensure the tightness of the margin.”



SCAN&WATCH

Application and working technique in class II by dr Karol Babinski.



CLASS III

●	BASE:	OliBULK Fill, shade MD
●	TOP:	ONEshade
	ADHESIVE SYSTEM:	OliEtch BOND

ProTIP from Dr. K. Babiński:

“In the case of minor class III cavities, the ONEshade material is completely sufficient. In the case of medium-sized cavities, it is worth using the combination of OliBULK Fill (inner, dentin part of the cavity) and ONEshade (outer layer, enamel).”



CLASS V

●	BASE:	OliBULK Fill, shade MD
●	TOP:	ONEshade
	ADHESIVE SYSTEM:	OliEtch BOND

ProTIP from Dr. K. Babiński:

“In order for the neck not to be too blue or too opaque, it is necessary to feel the proportion between OliBULK Fill and the outer layer of the ONEshade universal composite. Leave only about 0.5 mm of space for the outer layer.”



SCAN&WATCH

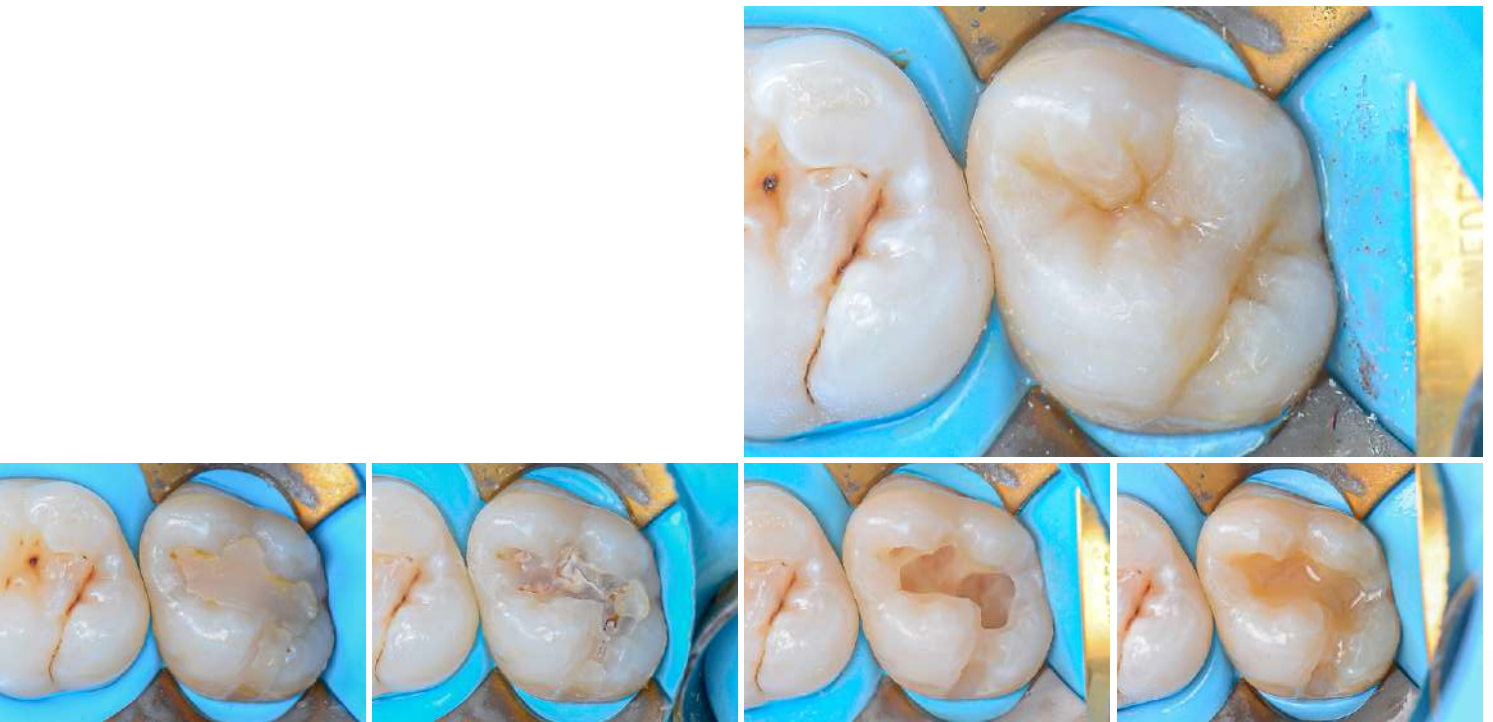
Application and working technique in class III by dr Karol Babinski.

POSTERIOR REGION

DR. KAROL BABIŃSKI

EXPERT OPINION:

„The use of the combination of OliBULK Fill MD and ONEshade composite allowed for a strict control of the bottom of the fissures and the course of individual morphological elements of the reconstruction.”



Clinical pictures by courtesy of **Dr. Karol Babinski**.
Composite materials used: OliBULK Fill MD and ONEshade. Poland, 2019.



EXPERT OPINION:

„Hyperchromatic composite OliBULK Fill MD, provided the saturation and opacity of the dentin layer, and the universal ONEshade material with chameleon effect allowed to focus on the artistic aspect of surface modeling without analysing the color aspect.”



Clinical pictures by courtesy of **Dr. Karol Babinski**.
Composite materials used: OliBULK Fill MD and ONEshade. Poland, 2019.





OliCo
NANO-CERAMIC COMPOSITE

REF OLO12 XP
Manufactured by
OliCo Sp. A. S.

OliCo XP

NANO-CERAMIC TECHNOLOGY

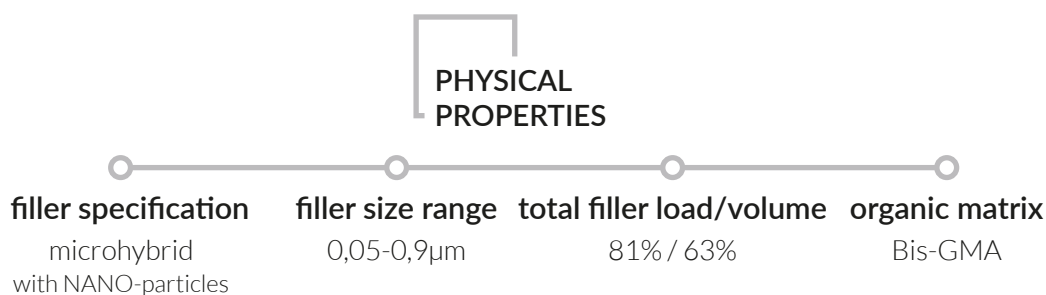
OliCo XP is one of the most versatile composites used in both the anterior and posterior regions. High aesthetics and above-average durability are a guarantee of a natural-looking filling and longlasting durability.

OliCo XP is a technologically advanced product with an intuitive and simple colour palette. Recently enriched with two very bright shades for patients who want to add super sparkle to their smile.



NANO-CERAMIC TECHNOLOGY

OliCo XP is the most optimal micro-hybrid composite based on nano-ceramic technology. Properly selected size, amount and distribution of filler particles is combined with a proven resin matrix. Such a multi-surface internal structure allows OliCo XP to achieve excellent strength parameters.



The aesthetics and durability of OliCo XP fillings make it the most-chosen composite for everyday work.

- Great consistency
- Easy to polish
- Excellent strength parameters
- Natural transparency and opalescence
- Lasting smoothness and shine.

SHAPE AND SHINE THAT LAST

The nanoceramic technology used in OliCo XP is appreciated in both the short and long term. Due to the high content of nano filler, the surface of the fillings is easy to polish*, and they retain their anatomical shape for years.

*diamond coated brush is recommended, e.g. Uporal 603



Tooth 46 with **OliCo XP** - control visit after 4 years

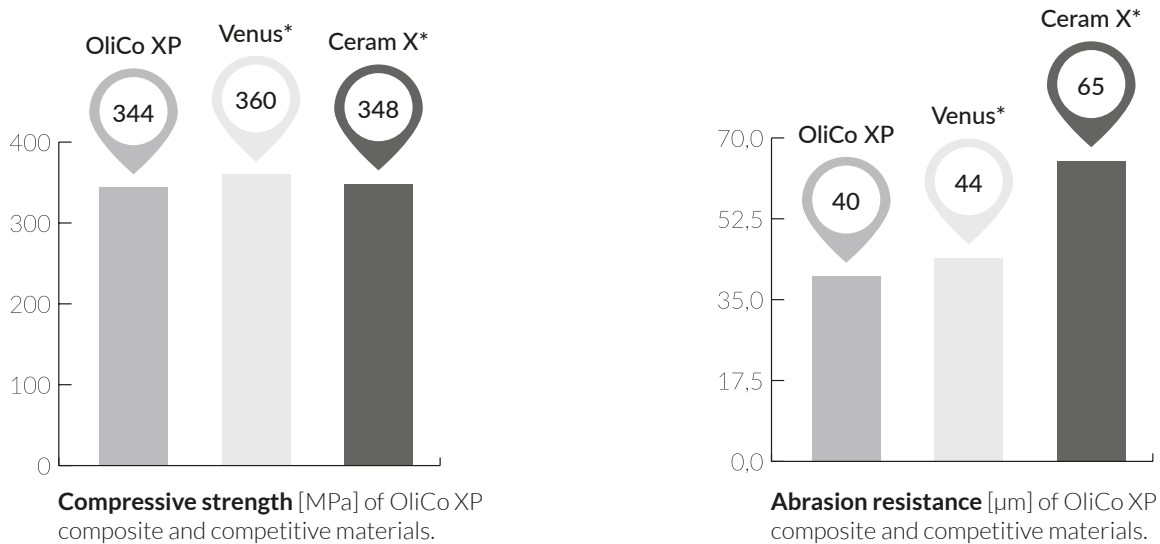


Tooth 26 with **OliCo XP** - control visit after 3 years

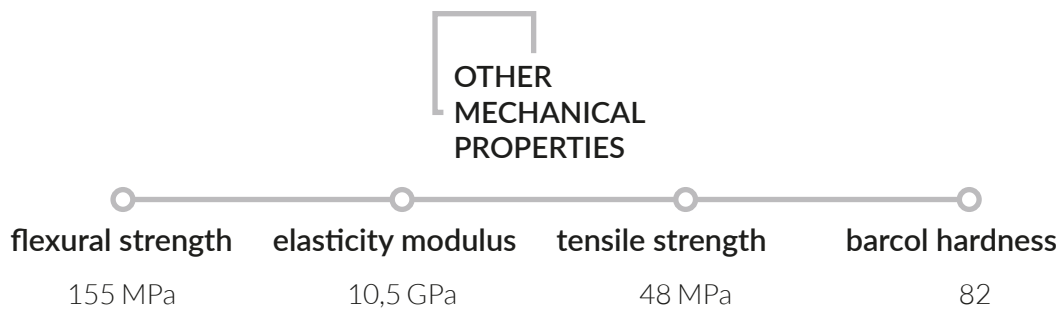
Clinical pictures by courtesy of **Dr. Karol Babinski**.

EXCEPTIONAL ABRASION RESISTANCE

Thanks to the nano-ceramic architecture, OliCo XP is crack-resistant and has a high abrasion resistance. Hence, many practitioners appreciate this composite not only for its aesthetics, but above all for its exceptional durability in the posterior region. Occlusally loaded restorations (even bruxism cases) are noticeably more durable than those made with the use of competitor materials.



Source: Internal manufacturer measurements, Germany 2014.
 * These brands are not registered trademarks of OLIDENT.



NATURAL OPTICAL PROFILE

Colour (hue, saturation, value), opacity, opalescence, and fluorescence create the optical characteristics of a natural tooth. The perfect composite gives the user the ability to mimic natural-looking tissue with a limited number of layers. The multi-surface internal structure of OliCo XP guarantees a natural optical profile of fillings. Together with the „chameleon effect”, the end result is always satisfactory and does not require excessive effort.

Removal of the previous filling and tissue preparation.

End result: aesthetic and permanent adaptation of OliCo XP in the cavity.



Clinical pictures by courtesy of **Dr. Karol Babinski**.
Composite materials used: OliCo XP, shade A2. Poland, 2018

ANTERIOR REGION

DR. IGOR FLORKIV

EXPERT OPINION:

“OliCo XP shades have varying degrees of transparency. It allows me to create restorations with varying complexity. I really like the simplicity and speed of the finishing polish, after a few movements and I get a great dry shine of the restoration. In short, it is my favourite anterior composite.”



Clinical pictures by courtesy of **Dr. Igor Florkiv**.
Composite materials used: OliCo XP, shade OA3 i A2 and AZURE Incisal. Ukraine, 2020.

THE SHADE CONCEPT

The intuitive collection of OliCo XP* shades does not require any special colour keys. The available range of colours is absolutely sufficient to rebuild both anterior and posterior teeth, regardless of the size and shape of the cavity. In most clinical scenarios, the result is **highly aesthetic and, above all, durable**.

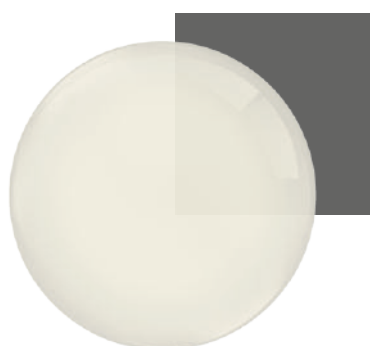


OliCo XP* shades are available in various opacity.

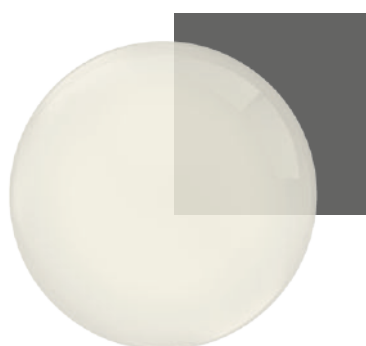
					opacity
dentine shades	OA2 OA3				89% - 90%
enamel shades	A1 A2 A3 A3.5	BLE - bleach BLX - extra bleach B1 B2	C2	D2 D3	80% - 82%
incisal shade	AZURE Incisal				55%



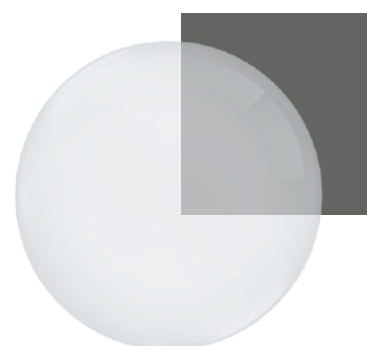
Comparison of the opacity of individual OliCo XP colour lines and new AZURE Incisal.



OliCo XP OA2



OliCo XP A2



AZURE Incisal

THE DESIRE FOR A "HOLLYWOOD SMILE"

Today's ideas of beauty are very diverse and patients have much bolder expectations than ever before. Beautiful white teeth help to create a youthful look and boost confidence. More and more often it is the patients themselves who make demands on the manufacturers of dental materials.

Due to its molecular versatility, OliCo XP has the widest colour palette, including two very light shades: BLE and BLX. Both colours in the anterior segment are very aesthetically pleasing.



Initial situation. The patient is dissatisfied with the aesthetics and shape of her teeth.



Reconstruction of both arches with direct technique (bonding).



Clinical pictures by courtesy of **Dr. Sadegh Ganji**.
Composite materials used: OliCo XP, shade BLE. Iran, 2020.







AZURE Incisal
NATURAL OPLAESCENT EDGE
49

AZURE Incisal

NATURAL OPLAESCENT EDGE



AZURE Incisal
NATURALLY OPTIMIZED EDGE

Incisal

UNIQUE EFFECT OF **NATURAL OPALESCENCE**

Why is opal inseparable from opalescence?

The light reflecting off the natural opal makes the stone appear bluish. The backlight brings out warm colours - from yellow to orange. It is the same with natural enamel. Light is reflected, refracted and scattered at the same time. The human eye sees a combination of cold and warm colours that give the effect of natural opalescence.



Sample veneer fully made of AZURE Incisal and illuminated from different sides.

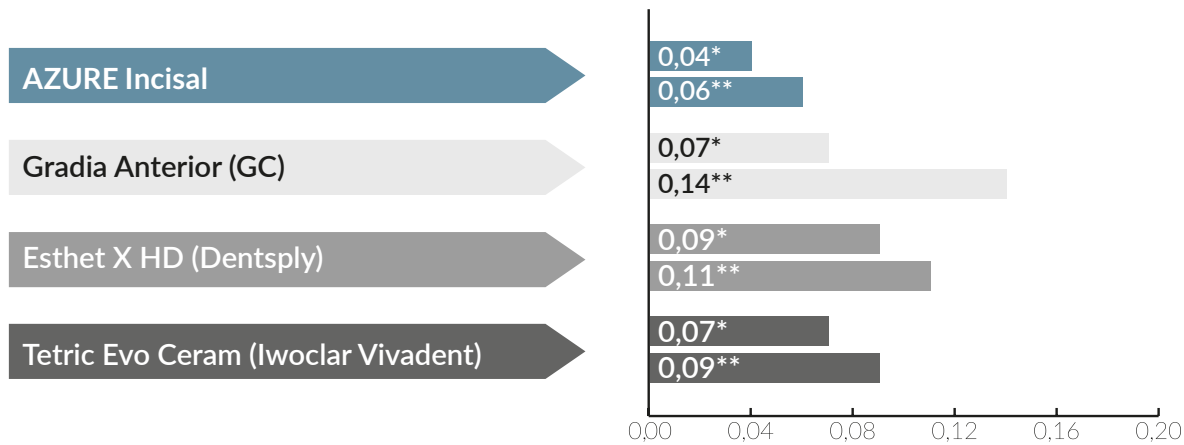
NEW FILLER CONCEPT

AZURE Incisal is also a unique material in terms of its molecular structure. The UDMA resin contains microfillers and nanoparticles, which constitute as much as 76% of the content. This innovative combination of the size of the filler particles and its quantity makes AZURE Incisal very convenient for the user. It does not stick to the tools, can be easily polished, and the smoothness and gloss of the fillings are extremely durable.



EXCEPTIONAL SMOOTHNESS AND GLOSS

Dentists appreciate the ease of polishing the composite during the final preparation of the filling. Patients expect long-lasting gloss of the teeth and a smooth surface. AZURE Incisal is so abrasion-resistant that even after repeated brushing, its surface practically does not tarnish.



Surface roughness Ra [µm] of AZURE Inisal composite and competitive materials.

*Initial situation (polished filling)

**Situation after brushing simulation (200,000 cycles)

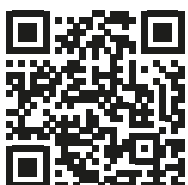
Tooth 2.1 - shape deformation caused by the patient's permanent habit.



End result: physiological reconstruction with a unique chameleon effect.



Clinical pictures by courtesy of **Dr. Igor Florkiv**.
Composite materials used: OliCo XP, shade A2, OA2, AZURE Incisal. Ukraine, 2019.



SCAN&WATCH

Watch the video demonstrating the tooth reconstruction procedure with OliCo XP.



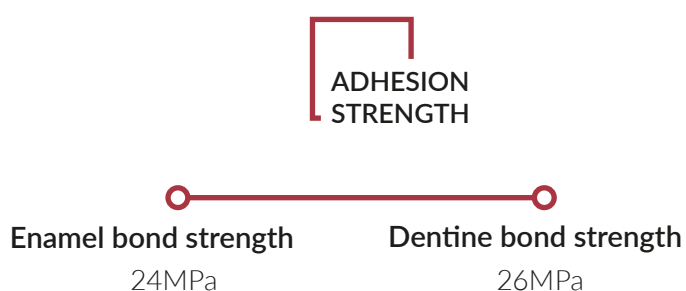
OliEtch BOND

SELF-ETCHING & SELF-ADHESIVE

SELF-ADHESIVE SYSTEM

OliEtch BOND is a single-bottle, single-layer, 7th generation bonding system with **10-MDP monomer**. It has been designed to simplify the procedure as much as possible, while maintaining excellent bonding quality.

Among the most popular self-etching systems, OliEtch BOND is distinguished by high values of bond strength. Just one layer of OliEtch BOND is enough to obtain a strong and long-lasting adhesion of composites and ceramics with natural tissues.



contains
10-MDP
monomer

One of the strongest
bonds on the market

HIGHLY ADHESIVE MDP MONOMER

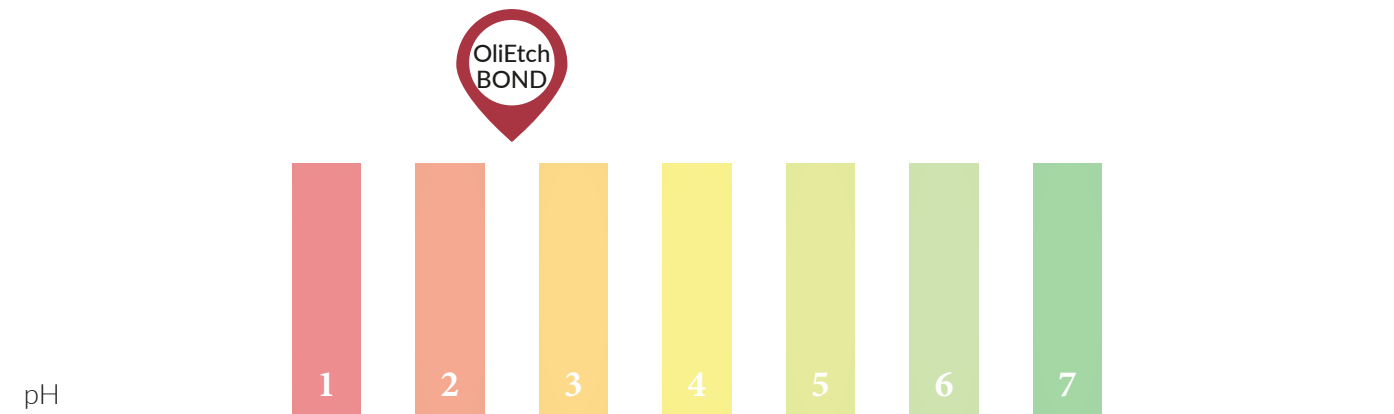
The OliEtch BOND monomer matrix consists of a mixture of proven methacrylate resins and acid monomers. The balanced combination of the **10-MDP adhesive monomer** and the **4-Meta** component increases the penetration of the monomer into dentin and guarantees high adhesion of resins to hydroxyapatite, composites and ceramics.

FREE FROM TOXIC MMA*!

*Methyl methacrylate

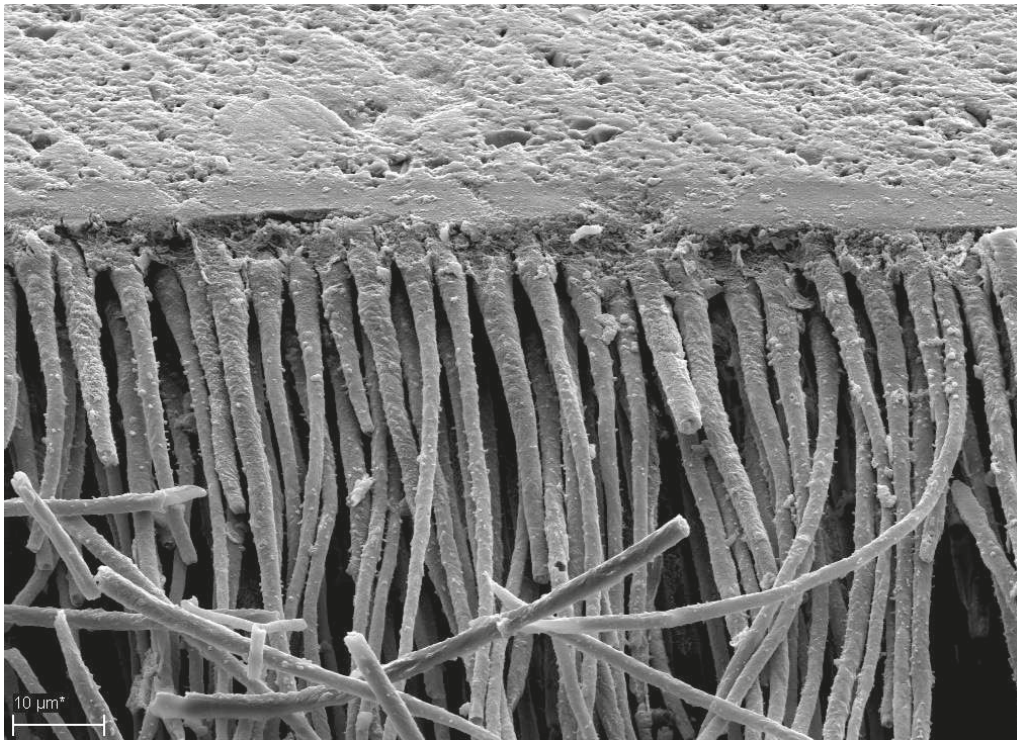
GENTLE AND EFFECTIVE ETCHING

The use of OliEtch BOND does not require prior etching. It is not only easy to use, but also eliminates possible procedural errors. In addition, the gentle etching mechanism (pH above 2) reduces the risk of postoperative hypersensitivity.



RELIABLE DESENSITISATION

OliEtch BOND can also be used to relieve existing dentin hypersensitivity. The hydrophilic acid components of OliEtch BOND penetrate the dentinal tubules. They then initiate protein coagulation in the dentin fluid, which physically blocks the tubules.



SEM examination and photos taken at the Polyclinic of Conservative Dentistry and Periodontology of the University of Munich.

CONVENIENT ADHESION PARTNER

The consistency of OliEtch BOND - described as „liquid honey” - is unique. Our consultants agreed that the OliEtch BOND application is comfortable and predictable thanks to its optimal viscosity and thixotropy. Bond easily spreads over the tissues, and when the air is used, it slightly liquefies, without forming the so-called pooling effect. The OliEtch BOND layer obtains a uniform thickness over the entire treated surface.



The consistency of liquid honey with thixotropic properties eliminates the - "pooling" - effect.

EXTENDED FIELD OF APPLICATION

Most light-curing systems are compatible only with light-curing composites. The indications for the use of OliEtch BOND have been extended to include dually-cured composites, e.g. cements for prosthetic works. The only requirement for the procedure is that, both the bond and the cement, have to be completely cured with the polymerisation light.

OliEtch BOND is compatible with:

- composites, compomers and ceramics (lithium ceramic and zirconium)
- light-curing and dual-curing composites
- two etching techniques (self-etch and selective etch)
- direct and indirect restoration techniques

contains

10-MDP
monomer

One of the strongest
bonds on the market





TT-Master

CONCEPT BY DR. KAROL BABIŃSKI

TT-Master tools are composite instruments designed by Dr. Karol Babinski. The unique shape of these instruments allows for convenient modelling of details, in both anterior and posterior teeth.

The instruments are covered with a special TT-glass titanium coating, which is scratch-resistant, extremely durable and acts as an anti-reflective coating.

WHEN SHAPE REALLY MATTERS

EXPERT OPINION:

„I use composite instruments every day. Until now, I have had to remake existing ones available on the market; which wasn't a perfect solution. I wasn't the only one pleased with the idea of designing my own tool shapes. Today, many of my colleagues use the TT-Master, which makes me extremely happy.”

Dr. Karol Babinski



NO. 1

- Elastic tips in the shape of a hockey stick and trowel
- Tip width 1.0 mm, length 8.0 mm
- Length of the entire instrument 17.1 cm
- Round handle, hollow inside.

NO. 2

- Elastic tips in the shape of a cylinder and a bent needle
- The diameter of the cylinder along its entire length is 0.8 mm, the length of the tips is 8.0 mm.
- Length of the entire instrument 16.3 cm
- Round handle, hollow inside.

To quickly distinguish both instruments, the TT-Master No1 grip is completely covered with TT-glass coating, while in the TT-Master No2 small silver fragments are uncoated. Such a distinction makes it much easier to recognise the instruments during operation.



OliBRUSH aesthetic

CONCEPT BY DR. KAROL BABIŃSKI

The set of OliBRUSH aesthetic tools is also the result of collaboration with Dr. Karol Babinski. Working with composites is not only about filling a tooth cavity, but most of all creating a beautiful surface morphology. An ideal brush should have optimal stiffness to guide the composite, not just smooth it. The carefully selected width and length of the bristles also affect the ergonomics of work when modelling the filling.

OliBRUSH aesthetic meet the above requirements. Moreover, they lie comfortably in the hand and are beautifully made. The offer includes two color versions of the brushes: BLACK and WHITE.

Wooden handle - the use of birch wood guarantees the lightness of the instrument, which, together with the ergonomic profile of the handle, ensures comfortable work.

Synthetic bristles - the availability of different fibres allowed for the selection of the ideal relationship between the stiffness and elasticity of the hair. Moreover, it is much smoother, more resistant to shredding and disinfecting liquids than natural fibres.

SURFACE ADAPTED SHAPE



BRUSH NO. 1

profiled for posterior teeth and fine structures; short bristles and a short working part allow for full control of work deep in the mouth.



BRUSH NO. 2

medium for smaller surfaces and structures.



BRUSH NO. 5

plane for larger anterior surfaces, e.g. incisors.



PACKAGING, SIZES, CODES

ONEshade

Packaging: 5g syringe
Reference Number: OL047 - Universal

Packaging: 20 x 0,3g capsules
Reference Number: OL129 - Universal

OliBULK Fill

Packaging: 2g syringe
Accessories: 3 needle tips
Reference Number: OL095 - Universal Dentin
OL117 - Medium Dentin

Packaging: 20 x 0,25g capsules
Reference Number: OL096 - Universal Dentin
OL118 - Medium Dentin

OliCo XP

Packaging: 5g syringe
Reference Number: OL011XP - A1
OL012XP - A2
OL013XP - A3
OL014XP - A3.5
OL015XP - OA2
OL022XP - OA3
OL025XP - BLE
OL026XP - BLX
OL016XP - B1
OL017XP - B2
OL018XP - C2
OL019XP - D2
OL020XP - D3

Packaging: 8 x 5g syringe
Reference Number: OL076XP - 1xA1, 2xA2, 1xA3, 1xA3.5, 1xOA2, 1xOA3, 1xB2

AZURE Incisal

Packaging: 4g syringe
Reference Number: OL0281 - Opal

OliEtch BOND

Packaging: 5ml bottle
Reference Number: OL003E

TT-Master

Packaging: 1 instrument
Reference Number: OL7483 - TT-Master no. 1
OL749 - TT-Master no. 2

OliBRUSH esthetic

Packaging: 3 BLACK brushes set
Reference Number: OL133 - no. 1B, no. 2B, no. 5B

3 WHITE brushes set
OL134 - no. 1W, no. 2W, no. 5W

OliBRUSH esthetic

Packaging: 3 x black brush
Reference Number: OL138 - curved black (no. 1B)
OL139 - small black (no. 2B)
OL140 - big black (no. 5B)

OliBRUSH esthetic

Packaging: 3 x white brush
Reference Number: OL135 - curved white (no. 1W)
OL136 - small white (no. 2W)
OL137 - big white (no. 5W)



www.olident.com



facebook.com/olident



instagram.com/olident.world



youtube.com/olidentcompany



OLIDENT